

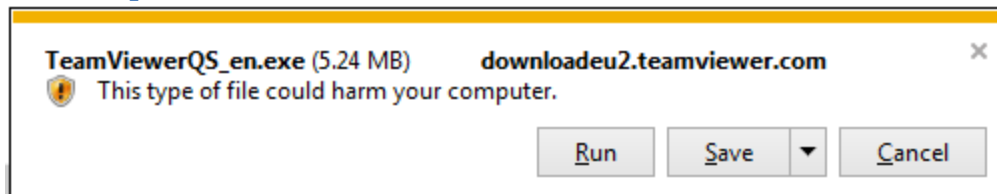
## Teamviewer Quick Support

### Link

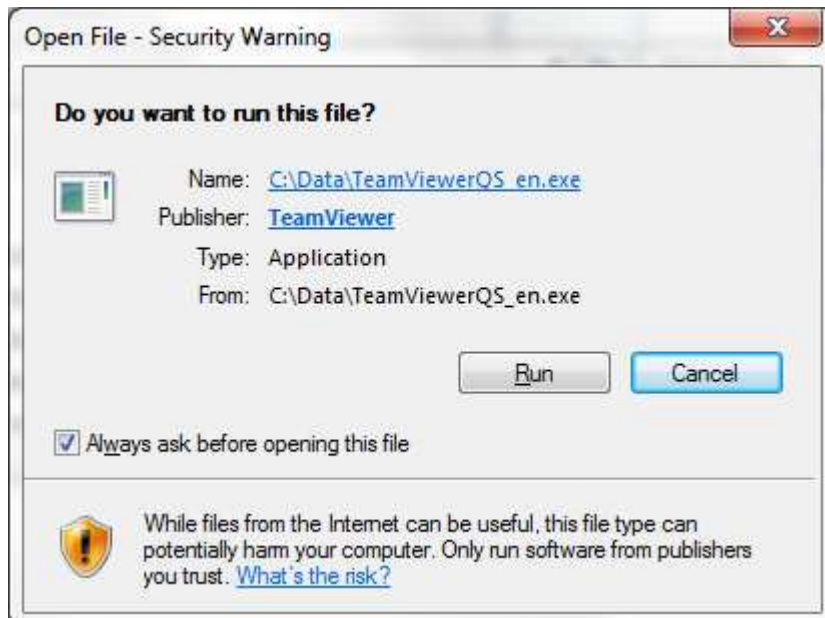
#### English Version for Windows

[http://download.teamviewer.com/download/TeamViewerQS\\_en.exe](http://download.teamviewer.com/download/TeamViewerQS_en.exe)

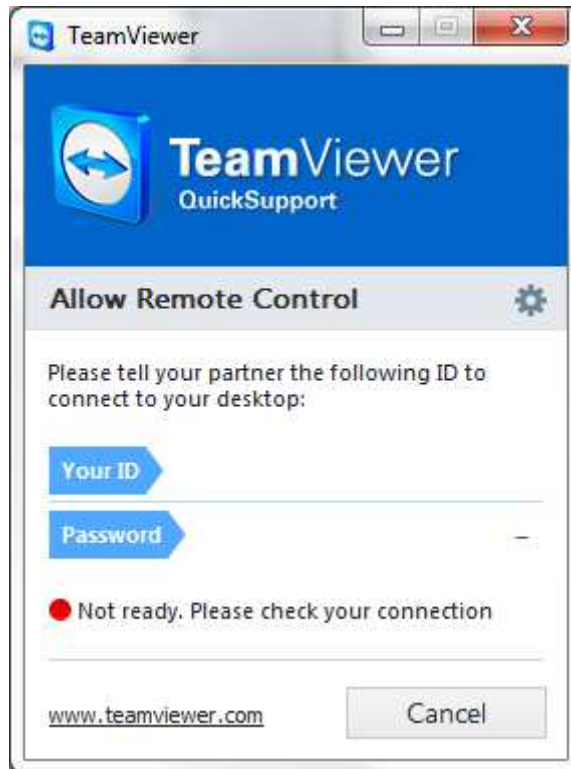
### Launch procedure



Click on « Run »

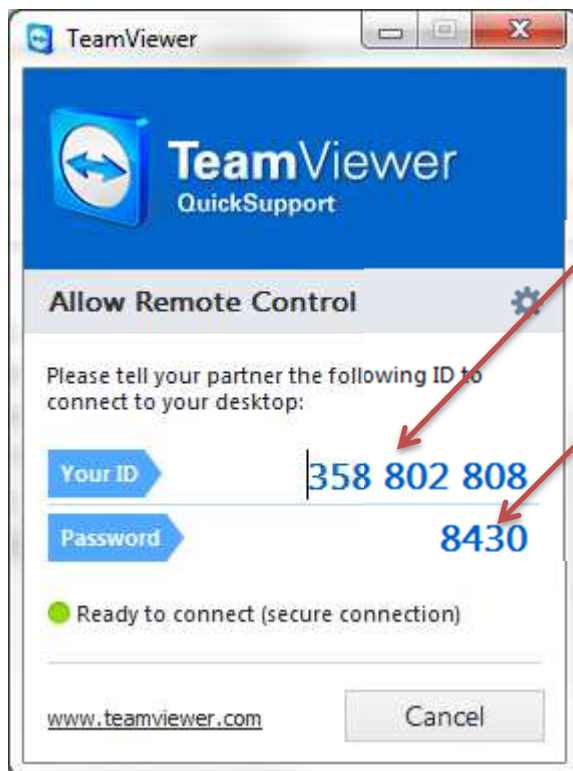


Click on « Run »



On slower connections, this may display for several seconds. Be patient till the message “Ready to connect (secure connection)” shows up. See “Using TeamViewer” chapter.

## Using TeamViewer



. **1)** Identifying number you have to give to your correspondent

. **2)** Password you have to give to your correspondent

In a first step, you have to give your ID **1)** ( 830 830 546), then, when your correspondent asks for it, give your password **2)** ( 2224).

On the next screen, your correspondent will have the control on your computer in order to help you out.