

Alternate access procedure for remote desktop (RDP)

- 1- Go on web page : <http://connect.herstalgroup.com>
- 2- Click on "Accès alternatif (2) : REMOTE DESKTOP"



- 3- Insert your login name and click on "submit"

A screenshot of a web form titled "Client Authentication". Below the title is a label "User:" followed by a white input field. Below the input field is a "Submit" button.

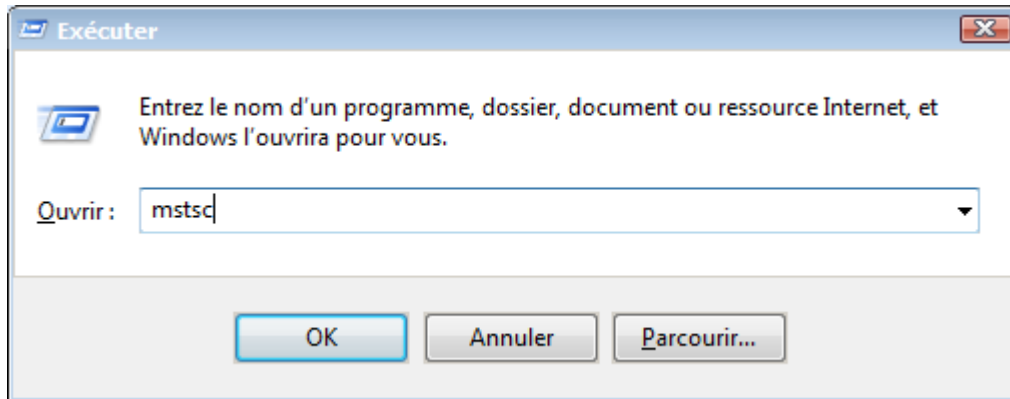
- 4- Insert your digipass code and click on "submit"

A screenshot of a web form titled "Client Authentication". Below the title is a label "password:" followed by a white input field. Below the input field is a "Submit" button.

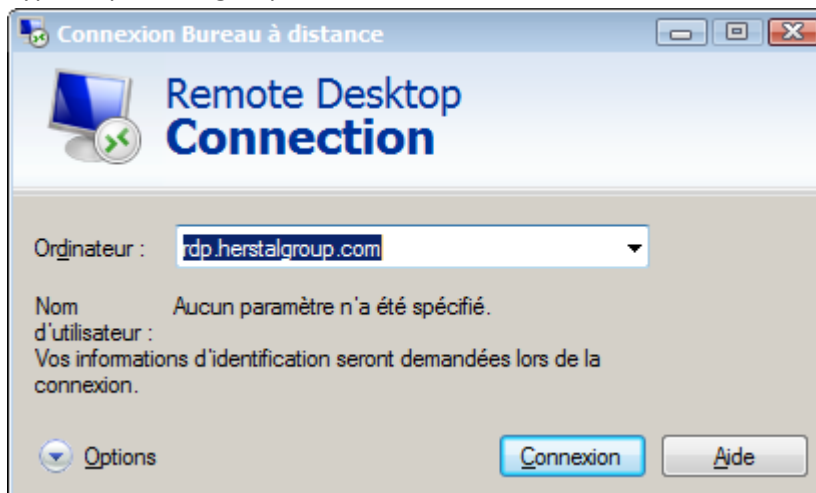
- 5- Select the option "standard Sign-on" and click on "submit"

A screenshot of a web form titled "Client Authentication". Below the title is the text "User fourni authenticated by Radius authentication". Underneath is a section labeled "Methods" with three radio button options: "Standard Sign-on" (which is selected), "Sign-off", and "Specific Sign-on". Below the options is a "Submit" button.

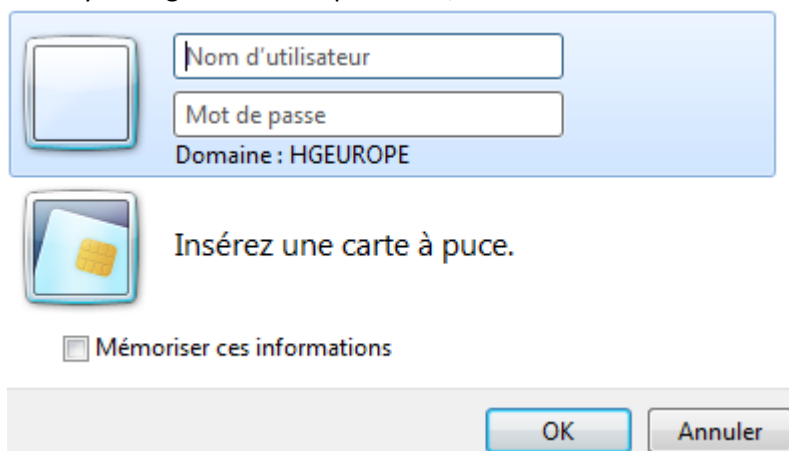
- 6- Click on Start button, "run", type "mstsc" and click on "ok"



- 7- Type "rdp.herstalgroup.com" and click on "connexion"



- 8- Insert your login name and password, click on "ok"



After an idle time of 30 days, without any connection to the distant access, your access will be blocked for security reasons.

It will be necessary to come back to us to unlock remote access for your account.